

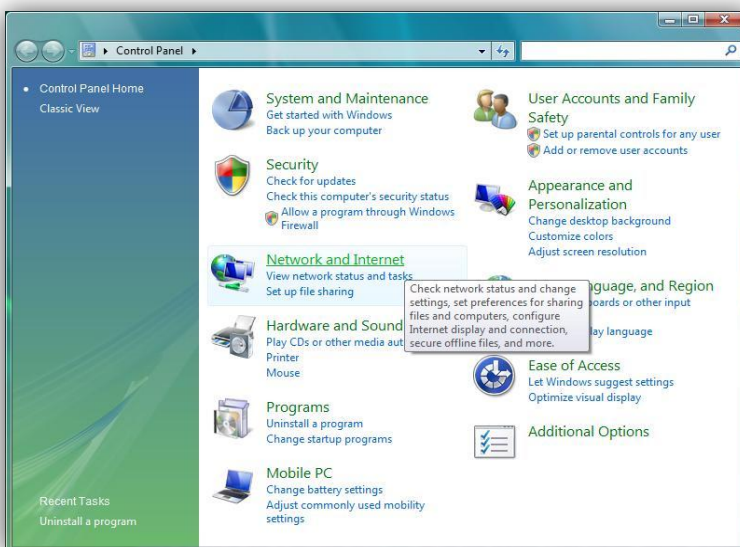


## Eduroam - Instructions for standard Microsoft driver in Windows Vista and Windows 7

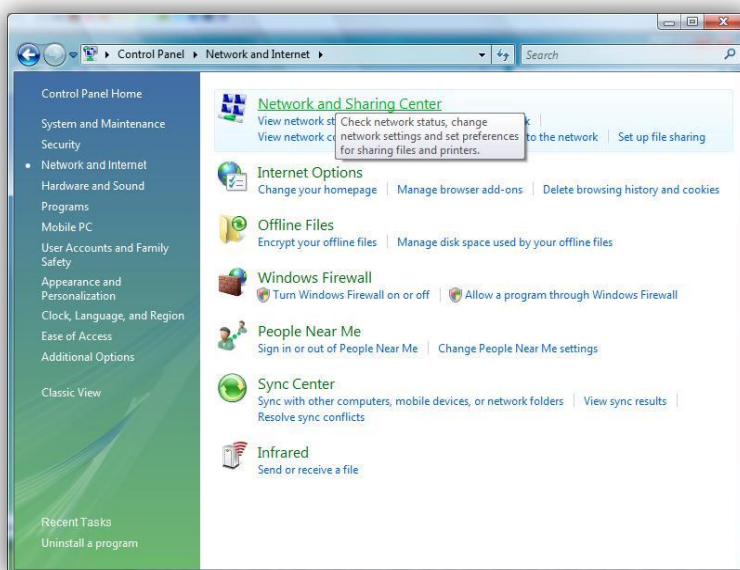
For this instruction to work, you have to disable any 3<sup>rd</sup> party WiFi managers and let Windows handle your WiFi settings.

**First get your EDUROAM (WPA) network secret at:**

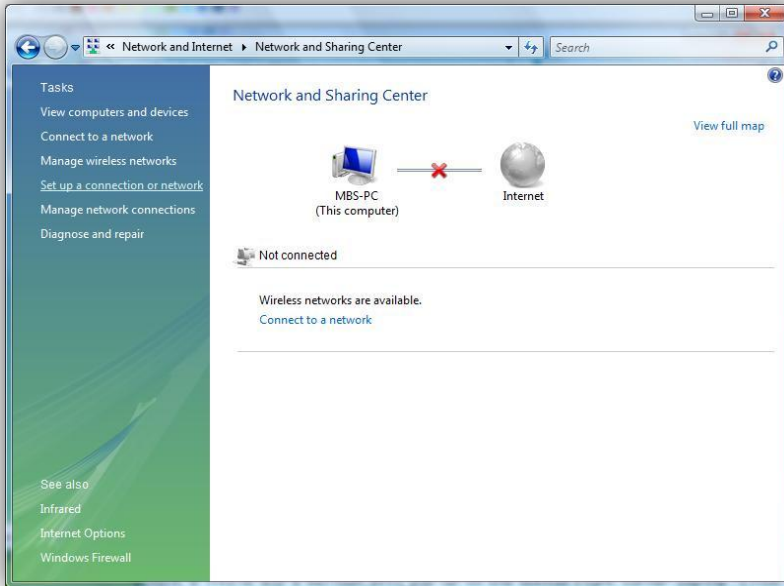
<https://login.sys.kth.se/peap.html>



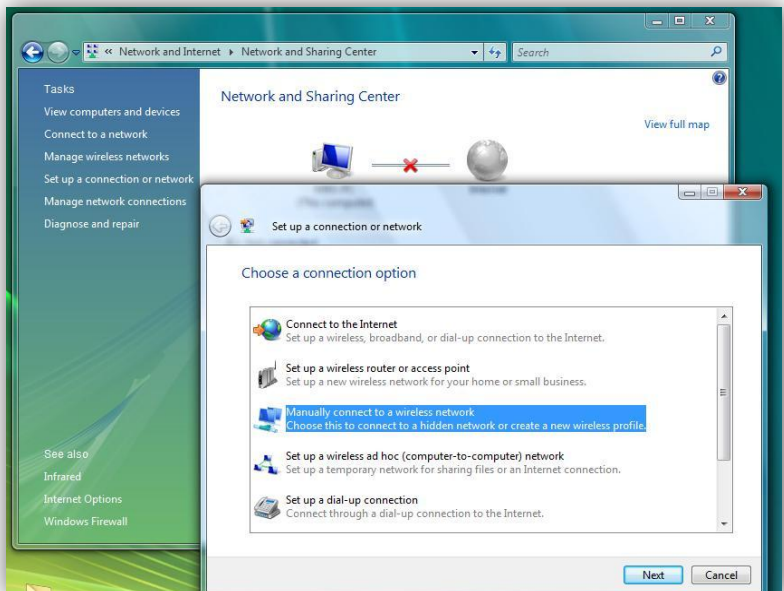
Open **“Network and Internet”**  
from **“Control Panel”**



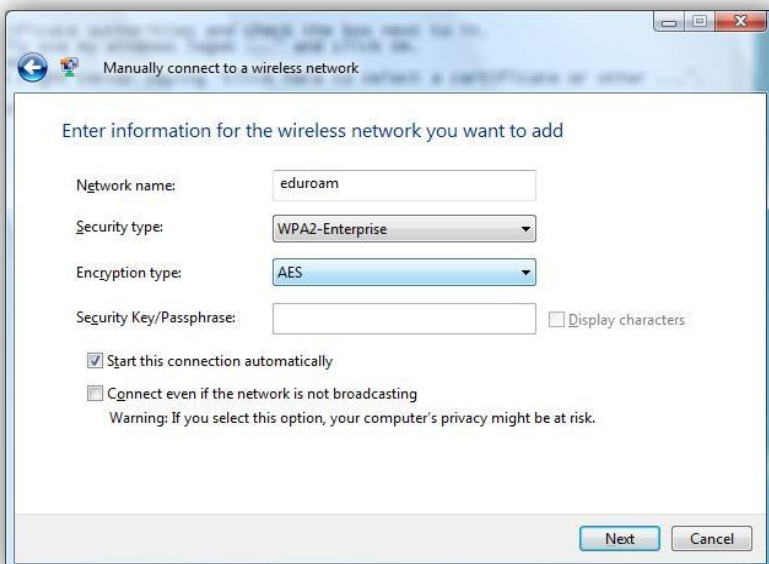
Open **“Network and Sharing Center”**



Chose “**Setup a connection or Network**”



Chose “**Manually connect to a wireless network**”



Enter the following settings.

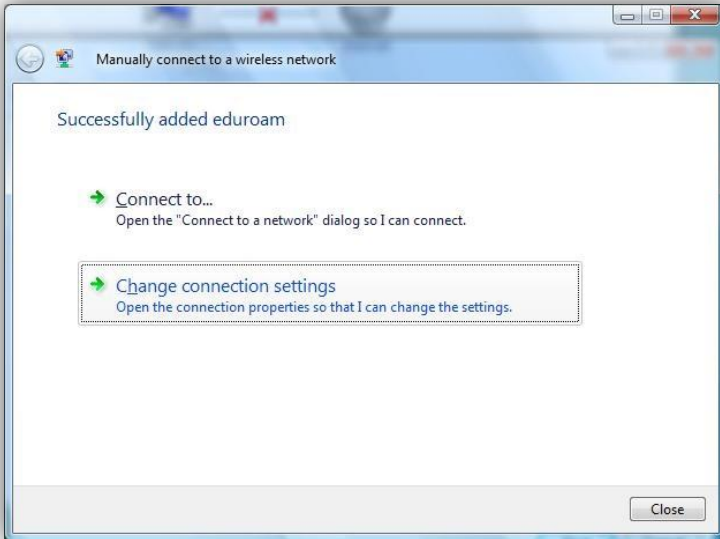
**Network name (SSID): eduroam**

**Network Authentication: WPA2 (or WPA**

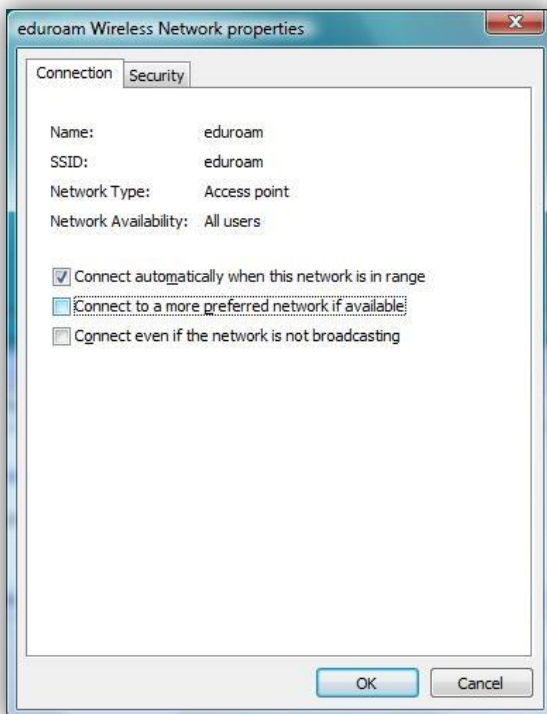
**if there's no WPA2 in the list)**

**Data encryption :AES**

Click next



In the next dialog box, chose **“Change connection settings”**



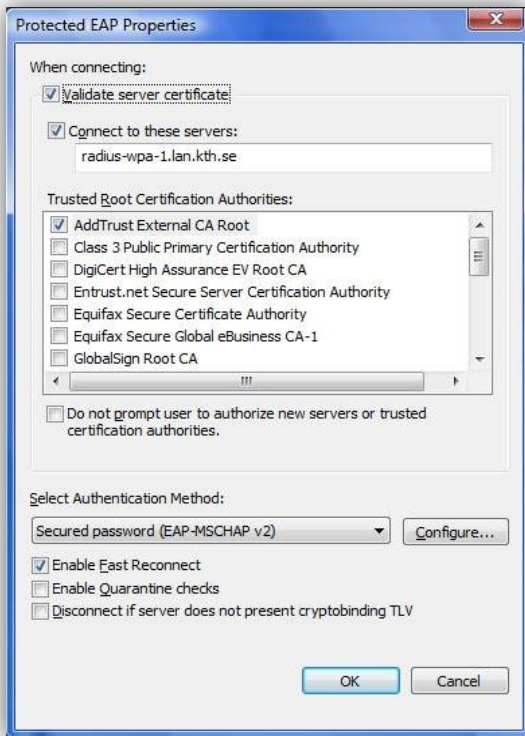
Go to the **security** tab



Use **“Encryption type AES”**

Network authentication method  
**Microsoft: Protected EAP.**

Click on **“Settings”**



Check box "Validate server certificate"

Check box "Connect to these servers"

Type in the dialog box **radius-wpa-1.lan.kth.se**

Check box "**AddTrust External CA Root**"

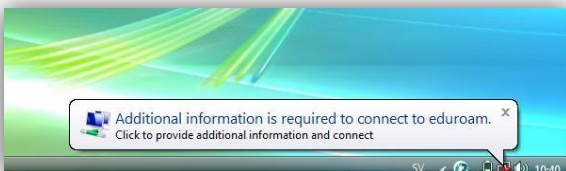
Select Authentication Method: "**Secured password (EAP-MSCHAP v2)**"

Click "Configure"



Uncheck "**Automatically use my Windows logon name and password (and domain if any)**"

Click **OK** on each open window to close them.



Click on the bubble "**Additional information is required to connect to eduroam**", when it appears.



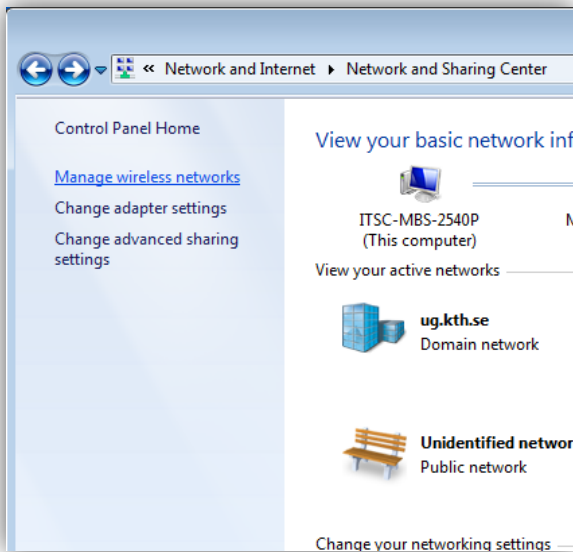
Enter your user name (e.g.nisse@kth.se) and the network secret which you retrieved from <https://login.sys.kth.se/peap.html>

Leave the domain field empty.

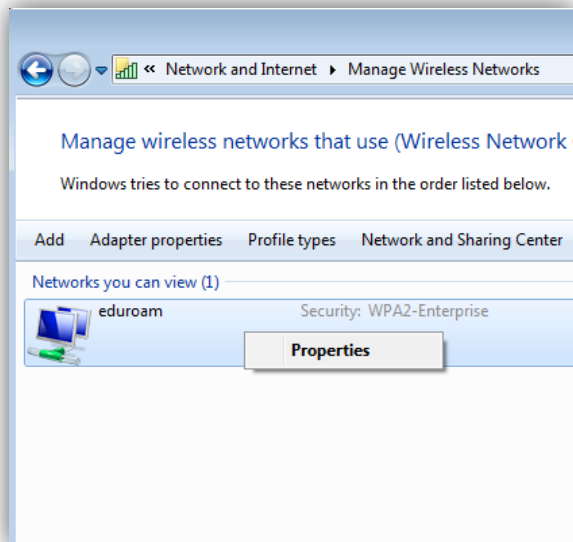
Click "OK"

Restart you computer and/ or **switch off and on WiFi** if needed.

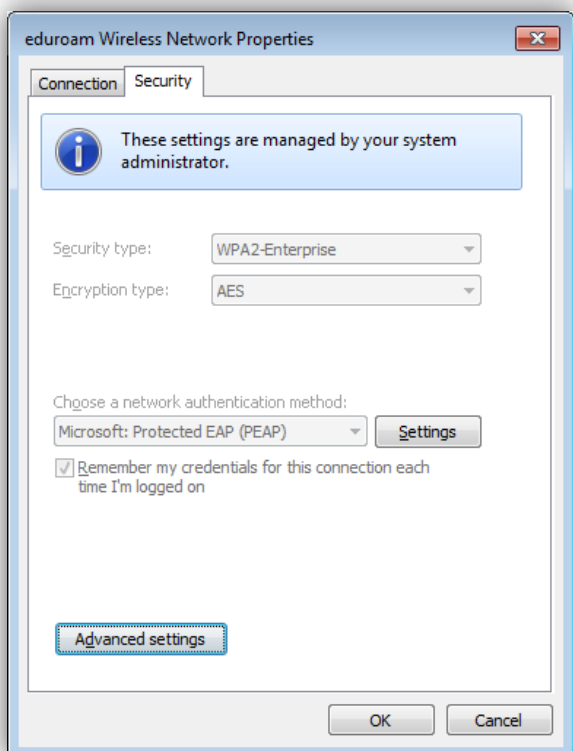
## Additional settings for Windows 7



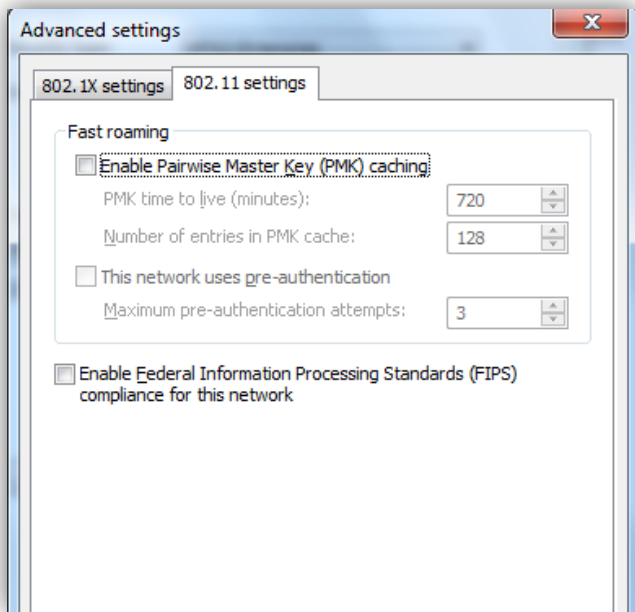
Open **Network and Internet** and **Manage wireless network**



Right click on EDUROAM and choose **Properties**



Choose **“Advanced settings”**



Uncheck **“Enable Pairwise Master Key (PMK) caching”**

You have now configured Eduroam

**Check your IP address configuration should be set to “Obtain an IP address automatically”**